

Blessing of the Beer Volunteer Parking and Check In

Outline

- Check In Location – Event Admin Tent
 - See slide 3
- Parking Information
 - Slides 4-8



These parking areas are primarily for event patrons. See subsequent slides for volunteer parking information. Volunteers may only park in these lots if 2 other locations are full.

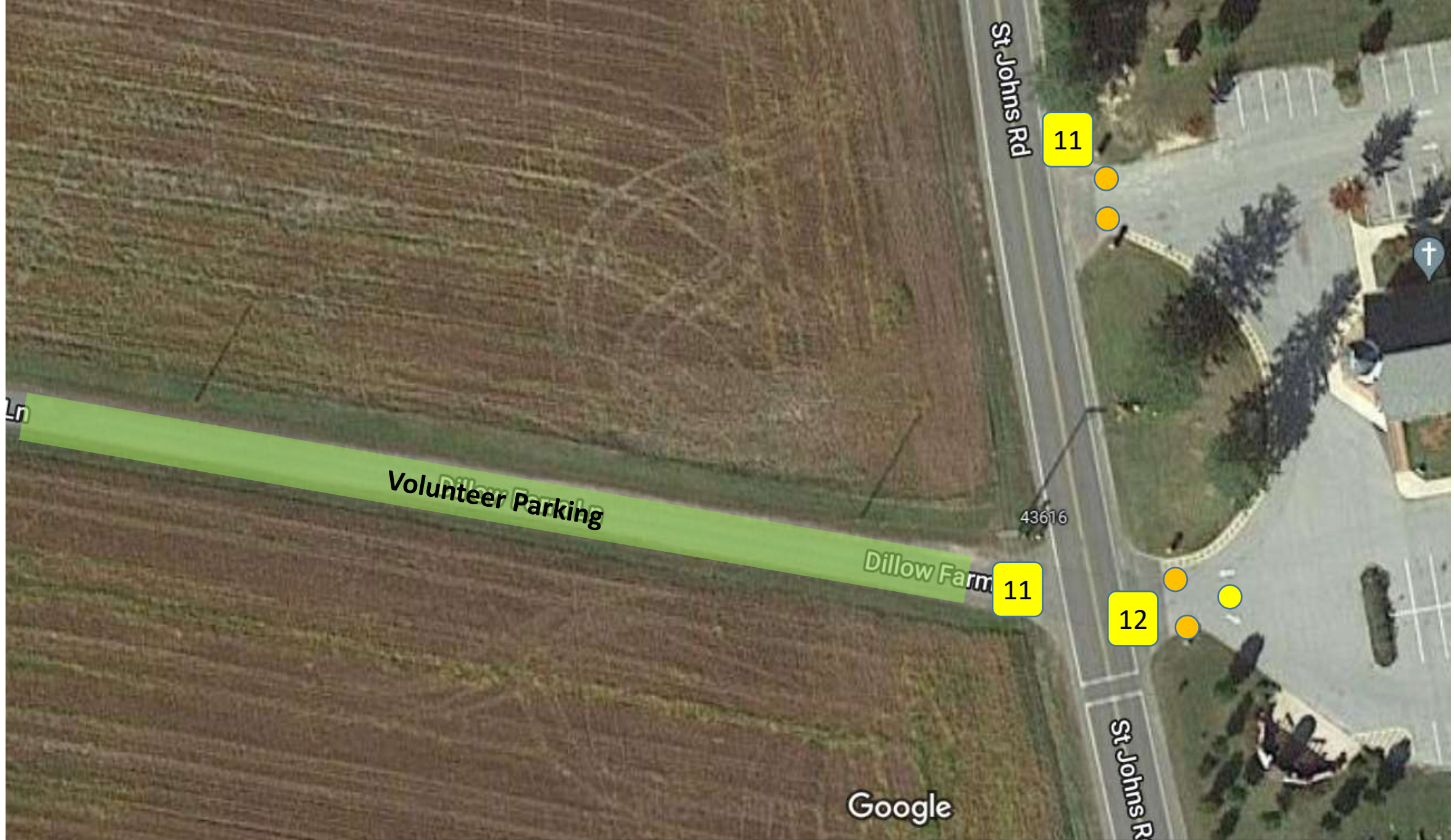
Event admin tent. Check in here no later than your shift start time.

Volunteer Parking

- Dillow Farm Ln (see next slide) will be open for volunteer parking all day
- The main church/school parking lot must be kept clear for the regular Confession (4 PM) and Mass (5 PM) schedule
- Volunteers shall not park in the regular church/school lot unless they are certain they will leave before 3:30 PM
- Volunteers who will be present after 3:30 PM must park at Dillow Farm Ln (see next slide)
- If Dillow Farm Ln becomes full, volunteers may park in the gravel area near the church rectory
- If the rectory area becomes full, volunteers may park in regular BOTB parking (ie school baseball/soccer fields)

Primary Volunteer Parking Area

- Dillow Farm Ln (depicted next slide)
 - Immediately across St. John's Rd from the main entrance to St. John's Parish/School parking lot
 - Once on Dillow Farm Ln, proceed all the way down the driveway to turn around
 - Park facing St. John's Rd in the grass on either side of the driveway



St Johns Rd

11

Volunteer Parking

Dillow Farm

11

12

43616

Google

St Johns R

Overflow Volunteer Parking Areas

- If Dillow Farm Ln is full
 - On St. John's parish grounds, in the gravel area near the rectory
- If the rectory area is full
 - Regular BOTB parking (ie the school baseball/soccer fields)

Overflow volunteer parking in gravel near rectory. Volunteers may park here if Dillow Farm Ln is full

Overflow volunteer parking in main BOTB parking. Volunteers may park here only if rectory area is full.



Overflow Volunteer Parking

BOTB Main Event

BOTB Parking

BOTB Parking

Handicap Parking

Parking Entrance